

# Basco® Type 500 Heat Exchangers.

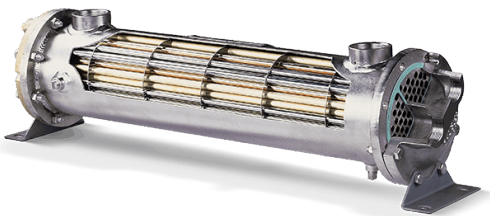
If you're looking for the industry leader in value and long-term reliability, look no further than the Basco Type 500 shell and tube heat exchanger. The Type 500 is cost-effective like a standard design, but with the versatility to be customized for your specific needs. Units are available as Commercial Standard, ASME, and ASME with TEMA-C.

## Performance notes.

- Cost-effective, standard design for maximum performance at minimum cost
- Readily available with short lead times
- Uses precision-punched baffles to minimize fluid bypass and maximize heat transfer
- Manufactured for a wide range of duties in state-of-the-art ISO-certified facilities

## Features and specifications.

- Removable and non-removable straight tube or U-tube bundles
- One-, two-, and four-pass designs
- High-strength shells in carbon steel or stainless steel
- Tubesheets are welded to the shell; holes are precision drilled for proper fit and sealing
- Baffles are hot-rolled punched steel for enhanced strength and reliability – engineered for correct fit to reduce tube wall damage from high-velocity liquids or gases
- Tubes are available in a range of materials, depending on the application, and are roller expanded using controlled pressure to ensure proper bond
- Heavy-duty mounting brackets can be reversed or rotated; slotted holes allow for quick install
- Fabricated end bonnet heads are standard on TEMA-C and some ASME units; zinc anodes available for added protection
- Connections available, threaded or flanged, in 3 in., 4 in., 5 in., 6 in., and 8 in. diameters – additional connections can be added



### Applications.

- Compressor systems
- Hydraulic systems
- Stationary engines
- Marine applications
- Turbines
- Paint systems
- Air dryers
- Vapor recovery systems
- Sterilizing systems
- Lube oil consoles

### Materials of construction.

**SHELL** Carbon steel, stainless steel

**TUBES** Copper, admiralty, 90/10 CuNi, stainless steel, carbon steel, titanium

**TUBESHEETS** Carbon steel, stainless steel, 90/10 CuNi

**BONNETS** Cast iron, cast bronze, 304/316 stainless steel, carbon steel

**BAFFLES** Carbon steel, brass, 304/316 stainless steel

### Standard ratings.

#### DESIGN PRESSURE

Shell side: 300 PSI (TEMA-C/ASME: 150 PSI)

Tube side: 150 PSI (TEMA-C/ASME: 150 PSI)

#### DESIGN TEMPERATURE

300°F (stainless higher)

#### TEST PRESSURE

All units tested pneumatically or hydrostatically

**MANUFACTURING FACILITY** | 2777 Walden Avenue | Buffalo, NY 14225, USA | +1.716.684.6700 | sales@apiheattransfer.com

**GLOBAL MANUFACTURING LOCATIONS:** USA: New York: Buffalo; Wisconsin: Franklin, Iron Ridge and Racine

Germany: Bretten and Dortmund | China: Shanghai and Suzhou

